



**SCHWAB<sup>®</sup> CORP.**

*Fire protection for vital records.<sup>™</sup>*



EVOLUTIONARY  
REVOLUTIONARY

# Because There is Fire, There is Schwab.



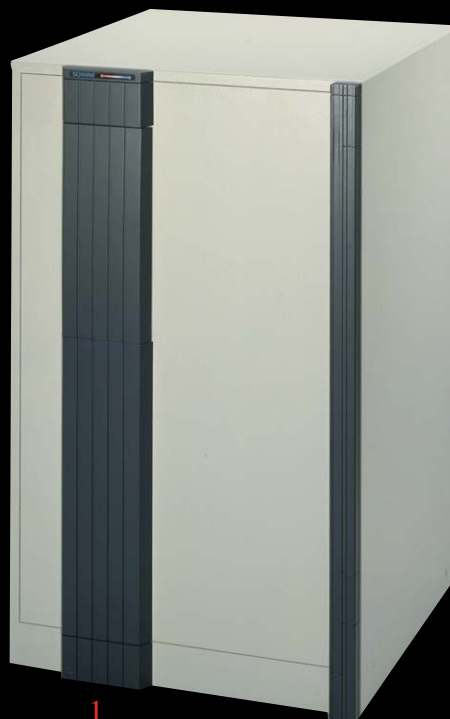
**Protecting your business from fire doesn't have to be ugly...**

**F**or over a century, Schwab has been protecting the valuable records of businesses and residential customers world-wide with its full line of fire-proof products. Today, 21st century design principles unite form and function in our revolutionary cabinet line.

Schwab cabinets are designed to be practical, effective, and also attractive with a contemporary look to enhance your office decor.

Every Schwab cabinet is made of the highest quality materials and is engineered to meet the most stringent industry requirements for fire protection. Each comes with a standard key lock and a complete line of options and accessories to meet your individual needs.

While business fires may be ugly, protecting your business from fire doesn't have to be.



SCHWAB MEDIA  
CABINET MODEL  
1826CTS SHOWN

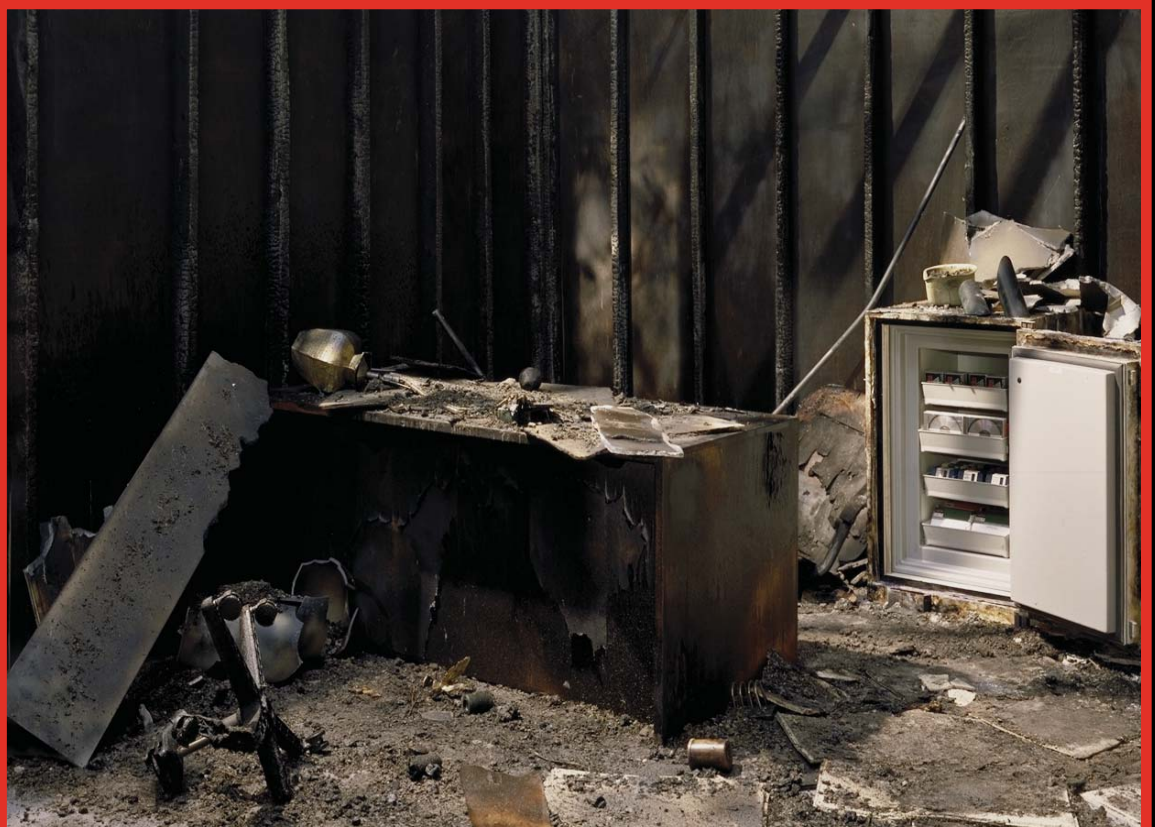
# Make Schwab An Attractive Addition to Your Disaster Plan.

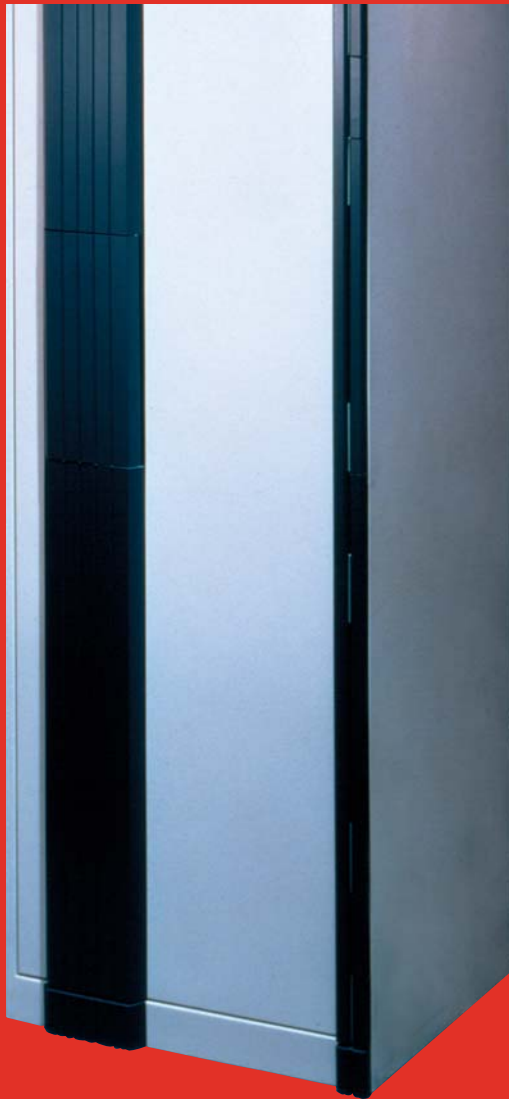
**D**isaster always strikes when least expected. Don't let your business records go unprotected. Make Schwab an important part of your disaster preparedness plan. When you think of Schwab, you typically think of fire, however Schwab is also a critical safeguard for all kinds of disasters. Fires often result from broken gas mains or electrical wires during tornados, hurricanes and earthquakes. The loss of confidential information can also be a disaster.

Some businesses use off-site storage, but must sacrifice easy access to their records and then pay costly monthly fees. Schwab provides a reasonably priced alternative to off-site storage and offers you and your staff much greater convenience. In many situations a Schwab safe or cabinet compliments off-site storage, providing interim security before movement to off-site areas.

Schwab has a full line of cabinets and safes ready to shield your vital business records from destruction, and at the same time add to the attractiveness of your office.

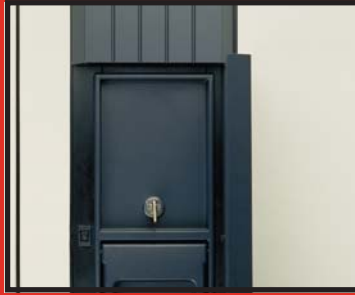
By storing your business records in a Schwab cabinet or safe, you ensure that if there is fire in the beginning, there will be survival in the end.





**SCHWAB MEDIA CABINET  
MODEL 1856CTS**

## Locking Options:



**Standard key lock**



**Optional digital combination lock**  
Installed part #13-1888



**Optional digital with key locking combo**  
Installed part #13-1890



**Optional dial combination lock**  
Installed part #13-1800



**Optional dial combination and key lock**  
Installed part #13-1802

locks are located inside the handle and not visible unless handle compartment is open (as shown).

**PLEASE NOTE:**

Warranties on locks are limited to the individual lock manufacturer's warranty.

**Model 1816CN (Record)**

U.L. Rating 350-1 Hr., fire and impact resistant  
Exterior: 22 3/4"W x 22 1/2"H x 24"D  
Interior: 18 1/4"W x 16"H x 18"D  
Weight: 330 lbs.

**Model 1821CN (Record)**

U.L. Rating 350-1 Hr., fire and impact resistant  
Exterior: 22 3/4"W x 27 1/2"H x 24"D  
Interior: 18 1/4"W x 21"H x 18"D  
Weight: 375 lbs.

**Model 1826CN (Record)**

U.L. Rating 350-1 Hr., fire and impact resistant  
Exterior: 22 3/4"W x 32 1/2"H x 24"D  
Interior: 18 1/4"W x 26"H x 18"D  
Weight: 420 lbs.

**Model 1831CN (Record)**

U.L. Rating 350-1 Hr., fire and impact resistant  
Exterior: 22 3/4"W x 37 1/2"H x 24"D  
Interior: 18 1/4"W x 31"H x 18"D  
Weight: 460 lbs.

**Model 1816CTS (Media)**

U.L. Rating 125-1 Hr., fire and impact resistant  
Exterior: 22 3/4"W x 22 1/2"H x 24"D  
Interior: 12 7/8"W x 10 1/2"H x 13"D  
Weight: 350 lbs.

**Model 1821CTS (Media)**

U.L. Rating 125-1 Hr., fire and impact resistant  
Exterior: 22 3/4"W x 27 1/2"H x 24"D  
Interior: 12 7/8"W x 15 1/2"H x 13"D  
Weight: 431 lbs.

**Model 1826CTS (Media)**

U.L. Rating 125-1 Hr., fire and impact resistant  
Exterior: 22 3/4"W x 32 1/2"H x 24"D  
Interior: 12 7/8"W x 20 1/2"H x 13"D  
Weight: 483 lbs.

**Model 1831CTS (Media)**

U.L. Rating 125-1 Hr., fire and impact resistant  
Exterior: 22 3/4"W x 37 1/2"H x 24"D  
Interior: 12 7/8"W x 25 1/2"H x 13"D  
Weight: 529 lbs.







**SCHWAB MEDIA CABINET  
MODEL 1826CTS WITH  
OPTIONAL ACCESSORIES**

## Protection With Style!

**Schwab cabinets are available to protect paper documents or computer media.**

**E**very Schwab cabinet is engineered to meet the highest industry requirements for fire protection. But fire-insulated cabinets or safes designed for storage of paper records cannot provide adequate protection for computer media. That's why Schwab offers a complete line of record and media cabinets. Choose the model that will best satisfy your needs.

### **This beauty is a beast!**

Just because they've been redesigned to look even better doesn't mean these Schwab products have lost any of their protective ability. Selecting an optional dial or digital combination lock instead of the standard key lock will convert any cabinet into a safe. Schwab's seamless construction and concealed hinges, handle and lock will change your perception of what a safe should look like, but they remain as tough as ever.

Each cabinet is available in two attractive colors - off-white and gray\*\*. Trimmed in charcoal, the result has a contemporary and aesthetically pleasing look. Caster base and/or floor mounts are optional accessories for most Schwab cabinets.

#### **Model 1844CN (Record)\***

U.L. Rating 350-1 Hr., fire and impact resistant  
Exterior: 22 3/4"W x 50 1/2"H x 24"D  
Interior: 18 1/4"W x 44"H x 18"D  
Weight: 575 lbs.

#### **Model 1844CTS (Media)\***

U.L. Rating 125-1 Hr., fire and impact resistant  
Exterior: 22 3/4"W x 50 1/2"H x 24"D  
Interior: 12 7/8"W x 38 1/2"H x 13"D  
Weight: 661 lbs.

#### **Model 1856CN (Record)\***

U.L. Rating 350-1 Hr., fire and impact resistant  
Exterior: 22 3/4"W x 62 1/2"H x 24"D  
Interior: 18 1/4"W x 56"H x 18"D  
Weight: 680 lbs.

#### **Model 1856CTS (Media)\***

U.L. Rating 125-1 Hr., fire and impact resistant  
Exterior: 22 3/4"W x 62 1/2"H x 24"D  
Interior: 12 7/8"W x 50 1/2"H x 13"D  
Weight: 806 lbs.

\* Caster base not available on these models due to tipping hazard

\*\*CS+ models available in off-white only



# Customize Your Record Cabinet.

## Available accessories.

**A**lthough Schwab record cabinets come with standard interiors, you may customize yours from our complete line of accessories.

Just as no two businesses are alike, neither are their record storage requirements. At Schwab, we've developed a complete line of accessories to meet those varied needs. Schwab cabinets come standard with our most versatile interiors. You may also select from additional accessories depending on whether your records are letter or legal size or are stored as computer printouts. Roll-out shelves and flat drawers with locks are secure, convenient and preferred by many of our customers. Choose the record safe accessories that are best for you.

## Media COOLER® gives you special protection.

**T**he Schwab **Media COOLER®** can turn your record cabinet or safe into one which protects computer media too! Cassettes, cartridges, disks and diskettes fit easily into this compact and economical case. When the COOLER is placed inside any Schwab U.L. Class 350 rated product, your computer media is then protected as well.

Schwab's Media COOLER has a spring loaded latch that automatically seals when the lid is closed.



**Schwab's Media COOLER®**  
An excellent addition to your record cabinet.

### Maximum Capacities

1/4" Tape Cassettes:	24
3480 Cartridges:	12
5 1/4" Diskettes:	96
3 1/2" Diskettes:	90
1/4" Tape Cartridge:	12
5 1/4" Optical Disks:	22
Compact Disks/DVDs:	20
8mm Cartridges:	20
4mm Cartridges:	40
JAZ:	9
ZIP:	28

### Specifications

Exterior:	12 1/4"W x 10"H x 10"D
Interior:	8 3/4"W x 6 1/2"H x 6 3/4"D
Weight:	15 lbs.



**SCHWAB RECORD CABINET  
MODEL 1856CN**

### Standard Interiors

Listed below are the standard interiors for each model.

**Models 1816CN, 1821CN, 1826CN:**  
1 flat drawer with lock  
1 adjustable shelf

**Model 1831CN:**  
2 adjustable shelves

**Model 1844CN:**  
3 adjustable shelves

**Model 1856CN:**  
4 adjustable shelves



### Roll-Out Shelf

Extending out on a smooth ball-bearing suspension, this shelf permits easy access to its entire contents. Accidental removal is prevented by a positive stop. Height required: 4 1/4" Installed part #13-1814



**SCHWAB RECORD CABINET  
MODEL 1831CN**



**SCHWAB RECORD CABINET  
MODEL 1844CN**



**SCHWAB RECORD CABINET  
MODEL 1826CN**



**Adjustable Shelf**  
Flat shelf adjusts at 1/4" intervals.  
Height required: 1 1/4"  
Installed part #13-1813



**Legal Drawer With Lock**  
Full legal size, this drawer is furnished with a handle, label holder, follower block and lock. Full extension is smooth on a ball-bearing suspension.  
Inside dimensions:  
15 1/2" W x 11 1/4" H x 16 1/4" D  
Height required: 13 1/2"  
Installed part #13-1816



**Flat Drawer With Lock**  
Complete with handle and key lock, this drawer can be conveniently used with removable cash tray or check tray.  
Inside dimensions:  
16 1/2" W x 3 1/4" H x 17 1/4" D  
Height required: 5"  
Installed part #13-1815



**Printout Bar With Shelf**  
Convenient for many uses, this adjustable shelf may be moved at 1/2" intervals. The attached hanger bar allows for efficient storage of printout binders.  
Height required: 13 1/4"  
Installed part #13-1817



**6" Tray**  
Ideal for filing media. Includes three follower blocks. Two trays can be used on an adjustable shelf or one tray on a roll-out shelf. Tray can hold **150** 5 1/4" diskettes, **15** 8mm cartridges, **12** 3480 cartridges, **9** TK50/70 cartridges or DLT, **30** compact discs or DVD's, **32** 5 1/4" optical disks.  
Height required per level: media height plus 1 1/4".  
Installed part #13-1807



**Multi-media Drawer**  
Spans entire interior and extends completely on a ball-bearing suspension. For storage of a variety of media. Includes six dividers. Holds same capacities as the multi-media tray.  
Height required per level: media height plus 1".  
Installed part #13-1811



**Tape Seal Hanger Bar With Shelf**  
For tape in seals. Significantly increases storage capacity. Adjustable at 1/4" intervals. Holds up to **12** tape reels per bar.  
Height required per level: reel diameter plus 1".  
Installed part #13-1812



**Multi-Media Tray**  
Multi-media tray spans cabinet interior for a wide variety of storage uses. For adjustable shelf only. Includes six dividers. Tray can hold **276** 3 1/2" diskettes, **292** 5 1/4" diskettes, **57** 4mm cartridges, **36** 8mm cartridges, **60** 1/4" tape cassettes, **22** 3480 cartridges, **18** TK50/70 cartridges or DLT, **52** ZIP, **28** JAZ, **64** 5 1/4" optical disks, **13** 1/4" tape cartridges, **60** compact discs or a combination of the above.  
Height required per level: media height plus 1".  
Installed part #13-1808



**Adjustable Shelf**  
Flat shelf adjusts at 1/4" intervals. Height required per level: 1 1/4"  
Installed part #13-1809

**SCHWAB MEDIA  
CABINET MODEL  
1826CTS SHOWN  
WITH INTERIOR  
OPTIONS**



## Media Protection Never Looked So Good!

For that extra protection media requires.

While paper records can withstand temperatures to 350° F, computer media is damaged beyond use by temperatures above 125° F and 80% humidity. Microfiche, film and computer media require the added protection that a Schwab media cabinet offers.

Media cabinets can be configured in a variety of ways to meet your specific storage needs. For your added convenience, these accessories can be easily changed as storage requirements evolve.



**4" Tray**  
Includes three dividers to keep contents easily accessible. Three trays can be placed on a roll-out or adjustable shelf. Tray can hold **92** 3 1/2" diskettes, **19** 4mm cartridges or **18** 1/4" tape cassettes.  
Height required per level: 4 3/4"  
Installed part #13-1806



**Roll-Out Shelf**  
Shelf extends completely on a ball-bearing suspension. Height required per level: media height plus 1".  
Installed part #13-1810

### Maximum Capacity For Media

Media Type	1816CTS	1821CTS	1826CTS	1831CTS	1844CTS	1856CTS
5 1/4" Diskettes	300	600	900	1,200	1,800	2,400
3 1/2" Diskettes	552	828	1,104	1,380	2,208	3,036
4mm Cart.	114	171	285	342	513	684
8mm Cart.	60	90	150	180	270	360
3480 Cart.	24	48	72	96	144	192
TK50/70 Cart.	36	36	54	72	126	162
DLT	36	36	54	72	126	162
1/2" DLT	32	48	64	80	112	160
1/4" Tape Cart.	26	39	52	65	91	130
1/4" Tape Cass.	72	108	180	216	324	432
5 1/4" Opt. Disk	64	128	192	256	384	512
4 x 6" Microfiche	4,824	7,236	9,648	12,060	16,884	24,120
CD/DVD w/case	60	120	180	180	300	420
ZIP	104	156	208	260	364	520
JAZ	28	56	84	112	168	224



# DATAFORTRESS™

## Secure On-Site Data Storage

The DataFORTRESS™ has been designed as an integrated solution to manage and safely store critical and regulated data. Our Information Safeguard System™ is the only available UL® rated hardware that can protect your data from disasters and contribute to compliance with regulatory legislation. It remains onsite and always under your control.



### DataFORTRESS Enterprise\*

<b>configuration</b>	2 Bay Hot-Swap
<b>available interfaces - Standard</b>	1x Hi-speed USB 2.0 (4-pin Type-B) 2x FireWire800 (9-pin IEEE 1394)  <i>*Other Custom Configurations Available on Request, Contact DataFORTRESS for details.</i>
<b>physical dimensions</b>	Height: 27 1/2" (700 mm) Length: 22 3/4" (580 mm) Width: 24" (610 mm) Weight: Dual Drive: 444 lbs. (201 kg)
<b>electrical specifications</b>	Input Range 110/220v Switchable
<b>fire protection</b>	UL Class 125-1 Hour Rated (Interior will not exceed 125°F or 80% humidity for 1 Hour) Operating temperature range 40°F to 78°F Non-operating temperature -40°F to 1700°F (60 minute duration)
<b>interface data transfer rates</b>	FireWire800 - 800 Mbits/s FireWire 800/400 - 400 Mbits/s USB2.0 - 480 Mbits/s
<b>operating systems (Software**)</b> <i>EMC Retrospect Professional</i>	Windows NT 4.0 SP6 or greater Windows 2000 Professional SP2 or greater Windows XP MacOS9, Mac OSX 10.1.5 through MacOSX 10.4 Tiger Mac OSX Server 10.1.5 through Mac OSX Server 10.4 Tiger
<b>operating systems (Clients*)</b> <i>EMC Retrospect Client</i>	Mac OS 7.1 or later, MacOSX 10.1.5 through MacOSX 10.4 Tiger MacOSX Server 10.1.5 through Mac OSX Server 10.4 Tiger Windows 95/98/98SE/NT Workstation/2000 Professional/XP Red Hat Linux 6.x, 7.x, 8.x, and 9.x SUSE Linux 8.0, 9.2, and 9.3 Novell Linux Desktop 9 Solaris 8, 9, 10 (SPARC platform only) Netware 5.1, 6.0, and 6.5
<b>warranty</b>	1 year parts and labor. Extended warranty available.  <i>**PLEASE NOTE: if your SOFTWARE is not listed above, we cannot guarantee that it will work with the EMC Retrospect software.</i>





Leo Schwab - Founder, Circa 1872.

## A Schwab Safe Means Peace of Mind.

**A variety of sizes offers a multitude of configurations.**

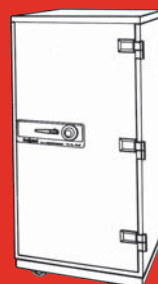
**S**ince 1872, Schwab Corp. has been manufacturing products to protect the valuables of banks, schools, hospitals and residential customers worldwide. You will find comfort in knowing that your Schwab FireGuard® Safe draws from well over a century of product development and manufacturing experience. FireGuard Safes are designed to handle the record protection needs of any business. A U.L. rating for fire and impact resistance accompanies every Schwab safe. From the smallest to the largest capacity safes on the market, a Schwab safe means peace of mind. In addition, Schwab offers the widest selection of American made record protection products.

### Safe and sound.

FireGuard Safes are equipped with a Group 2 key-change combination lock and a U.L. certified re-locking device to set the bolts if the lock is punched in a burglary attempt. Optional digital locks, x-ray proof locks, or key-locking combination dials provide added security against theft or espionage. Schwab FireGuard Safes are available in five standard colors: gray, charcoal, off-white, tan, and putty.



**Model 2532CTS (Media)**  
U.L. Rating 125-1 Hr., fire and impact resistant  
Exterior: 30 3/4"W x 41 1/8"H x 31 3/4"D  
Interior: 19"W x 27"H x 16 1/4"D  
Weight: 921 lbs.



**Model 2557CTS (Media)**  
U.L. Rating 150-1 Hr., fire and impact resistant  
Exterior: 30 3/4"W x 66 1/4"H x 31 3/4"D  
Interior: 19"W x 52"H x 16 1/4"D  
Weight: 1,350 lbs.

**Model 2557CN (Record)**  
U.L. Rating 350-1 Hr., fire and impact resistant  
Exterior: 30 3/4"W x 66 1/4"H x 31 3/4"D  
Interior: 25 1/8"W x 57 1/4"H x 23 1/2"D  
Weight: 1,078 lbs.





"The Boys"- circa 1930 prior to fire testing. See photos of testing at right. Please note the Schwab safe is still standing in picture 4.



**Stage 1**



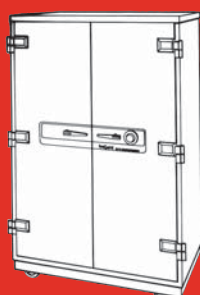
**Stage 2**



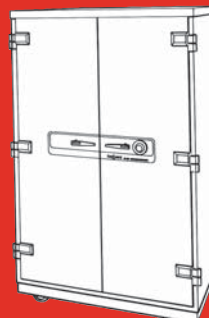
**Stage 3**



**Stage 4**  
*Still Standing*



**Model 3660CN (Record)**  
U.L. Rating 350-1 Hr., fire and impact resistant  
Exterior: 42 1/2"W x 69"H x 26 3/4"D  
Interior: 36"W x 60"H x 18 1/2"D  
Weight: 1,317 lbs.



**Model 4068CTS (Media)**  
U.L. Rating 125-1 Hr., fire and impact resistant  
Exterior: 47"W x 77 1/4"H x 31 3/4"D  
Interior: 34"W x 63"H x 16 1/4"D  
Weight: 2,190 lbs.

**Model 4068CN (Record)**  
U.L. Rating 350-1 Hr., fire and impact resistant  
Exterior: 47"W x 77 1/4"H x 31 3/4"D  
Interior: 40 3/8"W x 68 1/4"H x 23 1/2"D  
Weight: 1,744 lbs.

# Interior Components For Record Safes.

**Organize, secure and protect  
with Schwab record safes.**

**A**ll Schwab FireGuard® record safes have passed rigorous fire endurance tests and bear Underwriter Laboratories' 350°-1 Hour Fire and Impact Resistant label. This means that the safe's interior temperature will remain below 350°F (well below the char point of paper) upon exposure to temperatures reaching 1700°F for one hour.

It also certifies that Schwab FireGuard Safes will survive a drop of 30 feet into rubble during a fire, such as a fall through burning floors.

Schwab record safe interior components are constructed of welded steel and finished in attractive, durable air-dried enamel paint. They can be used in a variety of functional configurations.



**3660CN WITH  
OPTIONAL SIDE  
TAB FILING**

## Side tab interior option

**S**ide Tab interior option provides certified, point-of-use fire protection for vital business records. It offers 34 inches of filing space on each of five shelves. You can have your choice of stationary or pull-out shelves which are adjustable to either legal or letter size depths. Available only for model **3660CN** record safe. Each shelf includes three sliding dividers to keep file folders upright. Additional dividers may be purchased.

Side tab interior option with stationary shelves  
Installed part #13-5795

Side tab interior option with roll out shelves  
Installed part #13-5789



**SCHWAB RECORD SAFE 2557CN SHOWN  
WITH OPTIONAL KEY LOCKING HANDLE**



### Locker

Furnished with key lock, this locker makes storage both organized and secure.  
Size: 12" x 16" locker  
Inside dimensions:  
16 1/8"W x 12 1/4"H x 16 7/8"D  
Installed part #13-4992



### Adjustable Shelves

Available in four sizes for 18", 25", 36" and 40" wide safes. Shelves may be adjusted at 1/2" intervals, and added or removed as required.  
Installed part #:  
13-6045 (25 1/8"W)  
13-4472 (36"W)  
13-6048 (40 3/8"W)





**SCHWAB RECORD SAFE 3660CN  
SHOWN WITH OPTIONAL ADJUSTABLE  
SHELF AND LATERAL DRAWERS.**

36" lateral drawers are available for  
36"W safe only.  
Installed part #: 13-5703 (1 drawer)  
13-5660 (2 drawers)  
13-5679 (3 drawers)  
13-5676 (4 drawers)  
13-5670 (5 drawers)



#### **Removable Trays**

For use inside flat drawers, the cash tray or check tray is extremely handy. The check tray shown above will accommodate two rows of checks up to 8 1/4" wide and 3 3/4" high.

Installed part #13-4981  
Cash tray (not shown)  
Installed part #13-4980



#### **Flat Drawer**

Complete with handle and key lock, this flat drawer can be used with removable cash tray or check tray.  
Inside dimensions:  
16 1/4"W x 3 1/2"H x 16 3/4"D  
Installed part #13-4979

#### **Media COOLER®**

An excellent addition to your record safe is the Schwab Media COOLER (See Page 5).



#### **Card Drawers**

Available to accommodate 3" x 5" filing cards. Our card drawers include handles and follower blocks which keep all contents up front and easy to reach.  
3 - 3" x 5" Drawers  
Inside dimensions:  
5 1/4"W x 3 1/4"H x 13 3/4"D  
Installed part #13-4972



#### **Files**

Available in two sizes, each is furnished with handle, label holder and follower block. Full extension ball-bearing suspension makes access smooth and easy.  
Inside dimensions (legal):  
15 1/2"W x 11 1/4"H x 16 1/4"D  
Inside dimensions (lateral):  
31 3/8"W x 10 1/4"H x 15"D  
Installed part # 13-4993  
13-4994 with lock

# Media Protection At Its Best!

A variety of interior components allow FireGuard® media safes to be customized to your specific application. These components can be easily changed as storage requirements evolve.



## Storage Racks

Keep media upright. Three styles available. Each requires use with roll-out shelf.

## For 16mm Microfilm:

Height required per level: 4¼"

90 boxes per level in the 4068CTS and the 4057CTS.  
Installed part #13-6831

52 boxes per level in the 2557CTS and the 2532CTS.  
Installed part #13-6830

## For 3480 Cartridges:

Height required per level: 5½"

81 cartridges per level in the 4068CTS  
Installed part #13-6843

42 cartridges per level in the 2557CTS and the 2532CTS.  
Installed part # 13-6842

## For ¼" Tape Cartridges:

Height required per level: 4½"

56 cartridges per level in the 4068CTS  
Installed part #13-6837.

30 cartridges per level in the 2557CTS and the 2532CTS.  
Installed part #13-6836



## 4 ½" Tray

For TK50/70 cartridges or 8mm cartridges. Tray is portable. Includes one divider; extra dividers are available. Holds 11 TK50/70 cartridges per tray or 18 8mm cartridges per tray. Seven trays per shelf in the 4068CTS.

Four trays per adjustable shelf; three trays per roll out shelf in the 2557CTS and the 2532CTS.

Height required per level: 4 ¼" - 5 ¼"  
Installed part #13-6791

## Maximum Capacities for Media

Media Type	2532CTS	2557CTS	4068CTS
5 ¼" Diskettes	2,376	4,752	9,900
3 ½" Diskettes	2,928	5,856	15,372
4mm Cartridges	875	1,625	4,000
8mm Cartridges	560	1,040	2,560
3480 Cartridges	240	540	1,155
TK50/70 Cartridges	180	360	1,008
DLT	180	360	1,008
½" DLT	150	300	840
¼" Tape Cartridges	180	396	1,170
¼" Tape Cassettes	672	1,248	2,558
16mm Microfilm	360	660	1,680
5 ¼" Optical Disks	504	1,008	2,520
4" x 6" Microfiche	23,805	47,610	103,155
Aperture Cards	16,416	35,568	74,200
CDs/DVDs w/case	468	936	2,340
ZIP	680	1,360	3,094
JAZ	216	432	1,080





#### 4" Tray

For 3 1/2" diskettes or 4mm cartridges. Tray is portable. Includes one divider; extra dividers are available. Holds **114 3 1/2"** diskettes or **29** cartridges per tray. Eight trays per shelf in the **4068CTS**. Four trays per shelf in the **2557CTS** or the **2532CTS**. Height required per level: 4 3/4" Installed part #13-6244

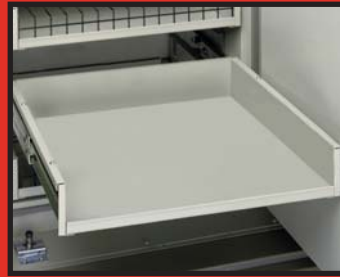


#### 7 2/3" Tray

For Aperture Cards. Removable tray has adjustable follower block. Holds **1,368** cards per tray. Four trays per shelf in the **4068CTS**. Two trays per shelf in the **2557CTS** and the **2532CTS**. Height required per level: 4 3/4" Installed part #13-6242

#### Adjustable Shelf

Adjustable at 1/4" intervals. Height required: media height plus 1/2". Installed part #13-6771 (4068) Installed part #13-5827 (2557, 2532)



#### Roll-Out Shelf

Extends completely on ball-bearing suspension. Positive stop prevents accidental removal. Height required: media height plus 1/2" (minimum level height-3 3/4") Installed part #13-6772 (4068) #13-5828 (2557, 2532)



#### 6 1/4" Tray

For microfiche, 5 1/4" diskettes, compact discs or 5 1/4" optical disks. Tray is portable. Includes one divider; extra dividers are available. Holds **1,329** microfiche, **166 5 1/4"** diskettes per tray, **35** optical disks, or **32** CDs/DVDs per tray. Five trays per shelf in the **4068CTS**. Three trays per adjustable shelf, or two trays per roll-out shelf in the **2557CTS** and the **2532CTS**. Height required per level: 5" - 7" Installed part #13-6154



SCHWAB MEDIA SAFE  
MODEL **4068CTS**

SCHWAB MEDIA  
SAFE **2532CTS**



SCHWAB MEDIA  
SAFE **2557CTS**  
SHOWN WITH A  
VARIETY OF OPTIONAL  
ACCESSORIES